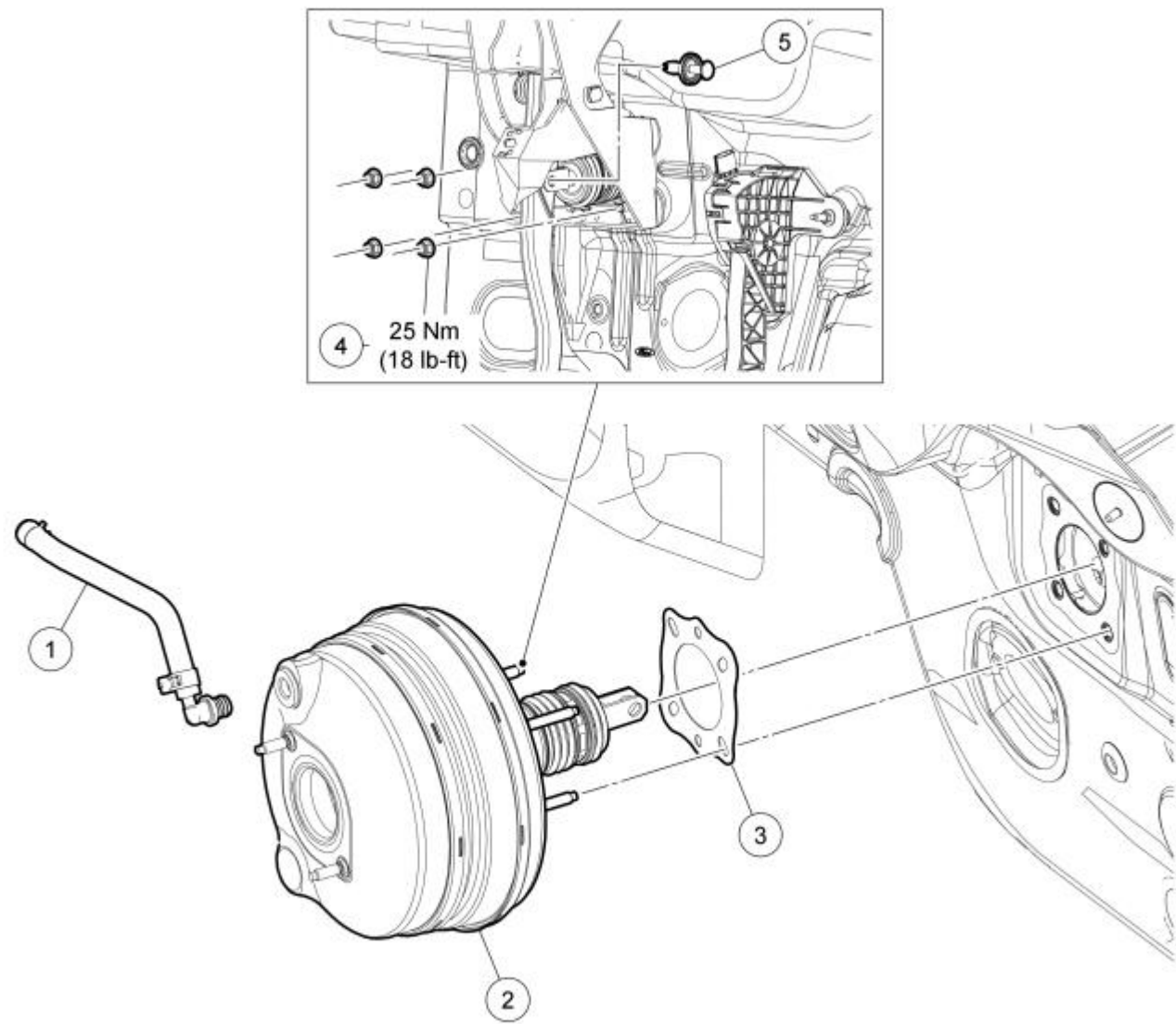


Brake Booster

NOTE: Automatic transmission shown, manual transmission similar.



N0112311

Item	Part Number	Description
1	—	Brake booster vacuum tube (9C482 automatic transmission / 9C490 manual transmission)
2	2005	Brake booster
3	2B022	Brake booster seal
4	W520112	Brake booster nuts (4 required)
5	2L523	Brake booster push rod clevis locking pin

Removal and Installation

1. Remove the brake master cylinder. For additional information, refer to Section 206-06.
2. **NOTICE: Do not service the brake pedal without first removing the stoplamp switch. Remove this switch with the brake pedal in the at-rest position. Attempting to remove the switch when the plunger is extended (during pedal apply) results in damage to the switch.**

Remove the stoplamp switch. For additional information, refer to Section 417-01.

3. **NOTE:** The booster push rod clevis locking pin is a one-time use only part. Any time the booster push rod clevis locking pin is removed, install a new booster push rod clevis locking pin.

NOTE: Use an 11 mm, 12-point socket or wrench to compress the 2 locking tabs on the clevis pin.

Compress the clevis pin locking tabs and pull outward on the opposite end of the pin, then remove and discard the clevis locking pin.

4. Remove the 4 brake booster nuts.
 - To install, tighten to 25 Nm (18 lb-ft).
5. Remove the brake booster from the vehicle.
6. **NOTICE: Do not press, pull or otherwise move the brake pedal while installing the stoplamp switch. Install this switch with the booster push rod attached to the brake pedal and with the brake pedal in the at-rest position. Installing this switch with the brake pedal in any other position results in incorrect adjustment and damages the switch.**

To install, reverse the removal procedure.
